

Trendz *Series*

Carpet Tiles

Commercial
Space



 **Infinity**[™]
Commercial Carpet Tiles

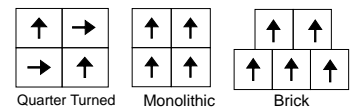
Solid Colors

from High Quality Raw Material



the Modular Flooring

Recommended Installation Methods



PERFORMANCE SPECIFICATIONS

Colourfastness : Grade ≥ 4 (AATCC Test Method)

: Result: 6 = OK

Flammability: Passed (GB/T1476B-1993)

Static Propensity: ≈ 3.0 kV (AATCC-134, GB/T 18044-2000)

Specifications

Dye Method: Solution

Dyed Size: 50 x 50cm/Tile

Construction: 100% PP Loop Pile

Gauge: 1/10" Stitches

Height: 3.5mm-4.5mm(+/- 0.5mm)

Pile Weight: 500 gm/m

Backing: Bitumen



Trendz Series

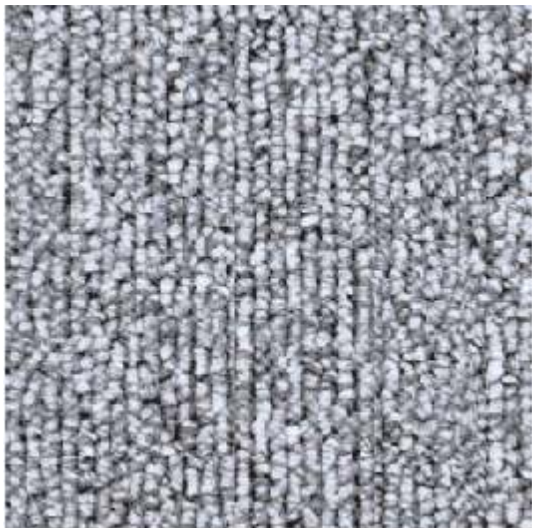
High Performance Tiles



TS 7000/7002/7007

KT1003

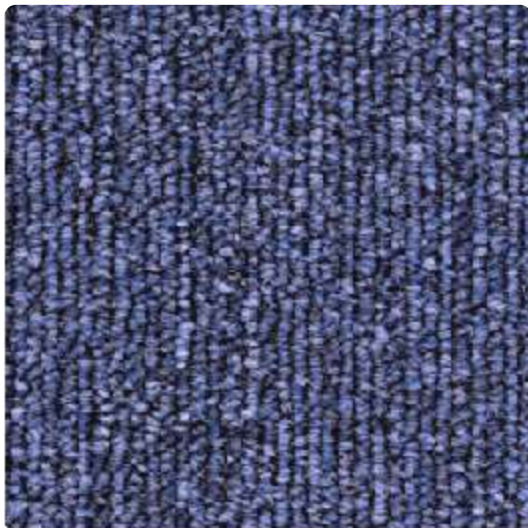
Light Grey



TS 7000



DarkBlue



TS 7002



Beige



TS 7003



Red



TS 7005



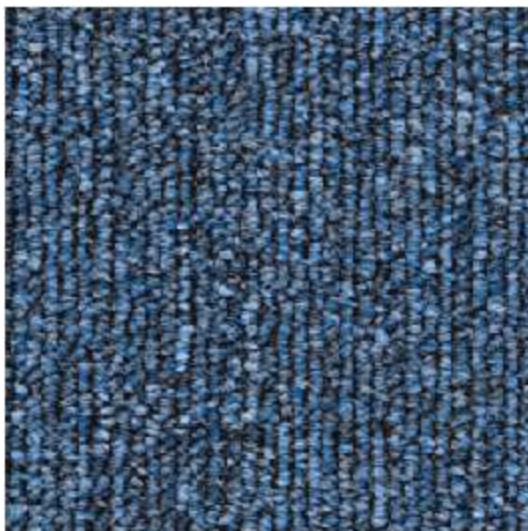
Dark Grey



TS 7007

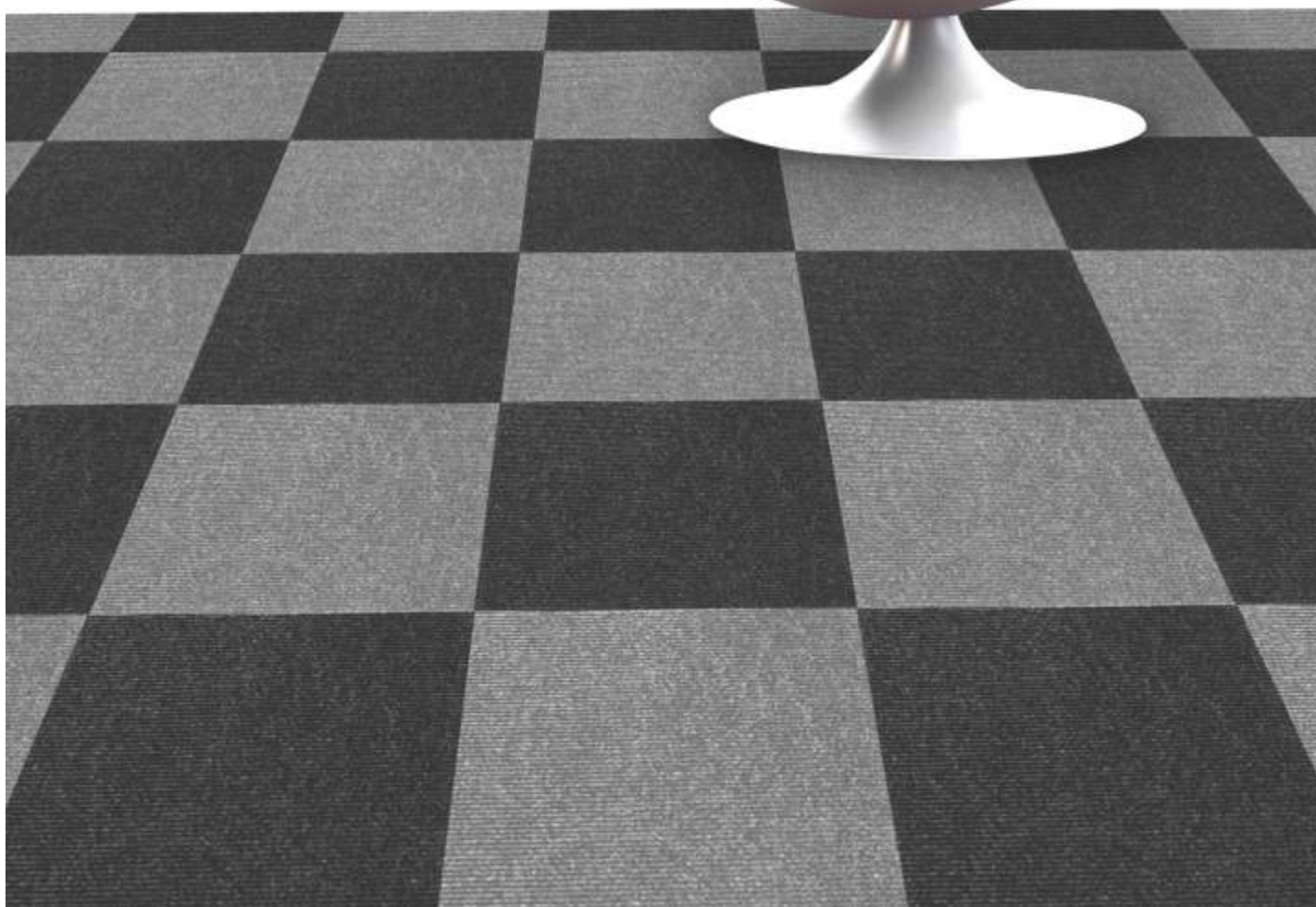


Blue

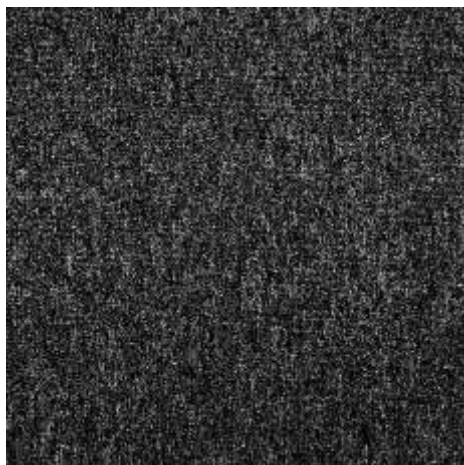


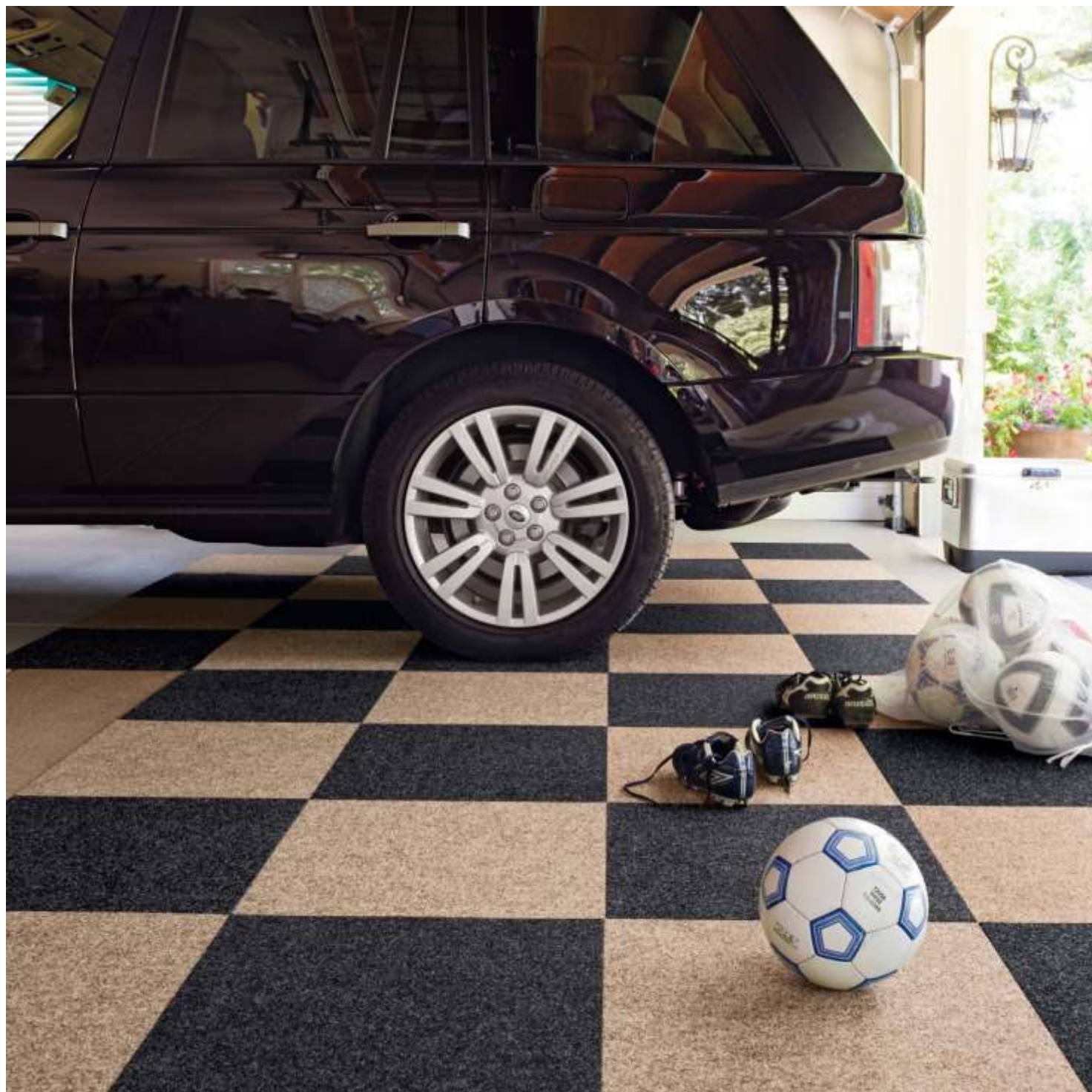
TS 7010



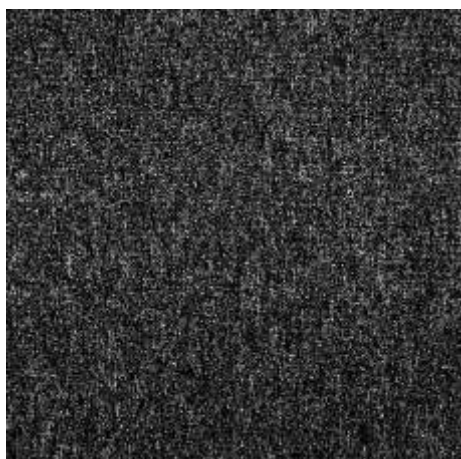


TS 7000/TS 7007





TS 7003/TS 7007





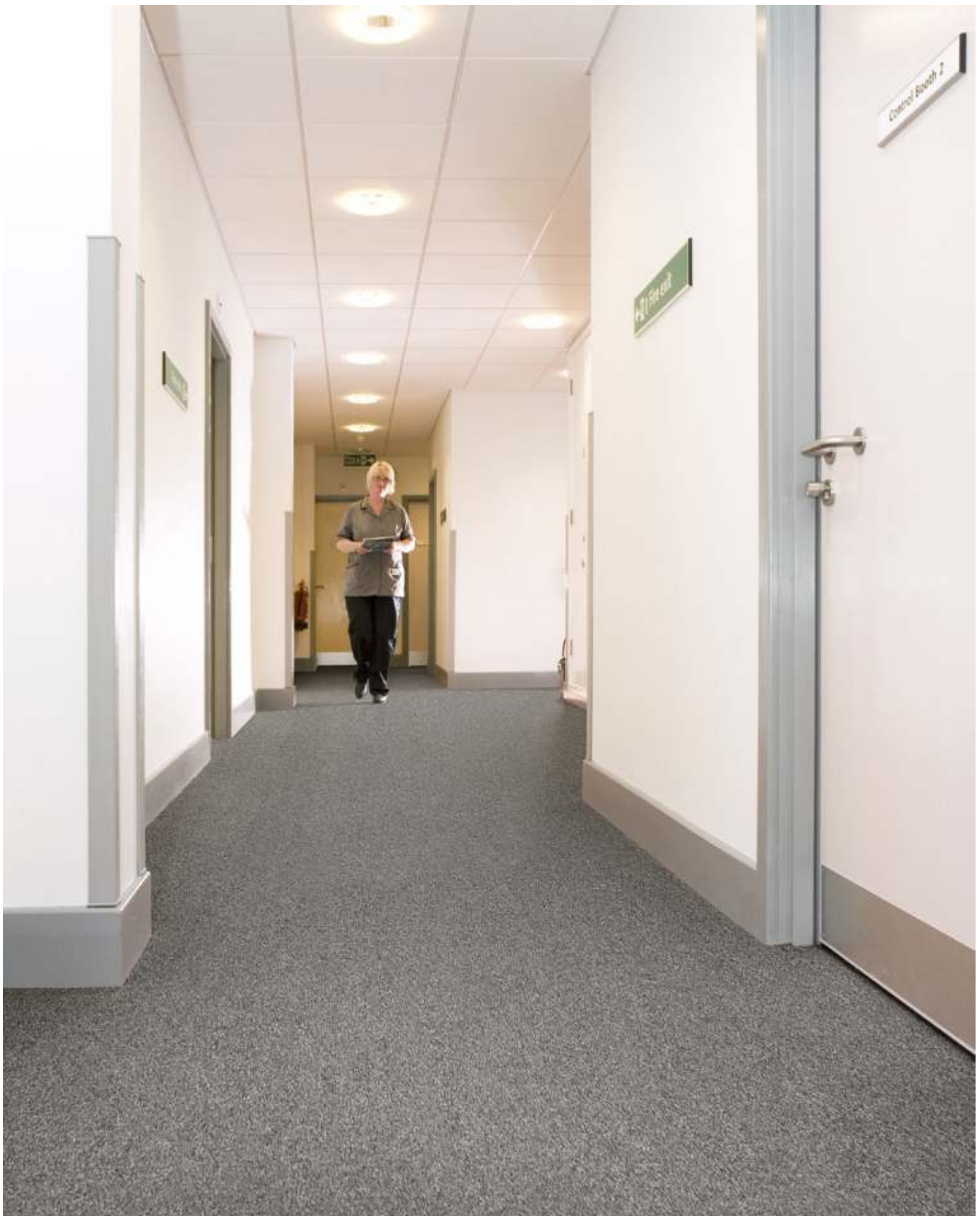
TS 7000/TS 7010





HIGH QUALITY FIBER YARN





The Best choice for Commercial Carpet Tiles

TS 7000





SPECIFICATION

Style Name	Trendz Series
Construction	Level loop
Fiber System	100% Advanced PP
Gauge	1/10"
Pile Weight	525g/m2
Pile Height	4mm/5mm±0.5mm
Backing	Environment Friendly Bitumen
Modular Tile Size	50cm*50cm
Packing	20 Pcs/Carton

Infinity Carpet tiles are manufactured with high quality raw material & modern technique. Our professional design team is well-versed in quality carpeting products and materials which has the best designs of carpets that matches for your needs and lifestyle. Infinity Carpet tile offers you extensive possibilities in flooring for choice and design with its Quality durable carpets. It has successfully combined innovation and skill to produce a diverse range of Commercial Carpet Tile product offerings for all market segments. Infinity Modular Carpets are suitable for use across all segments of the commercial market including:

- Education
- Healthcare
- Office
- Banks
- Universities
- Retail
- Hospitality
- Public Space
- Multi-Residential Apartments

CARE & MAINTENANCE

The beauty and life of your carpet depend on the care it receives. Proper cleaning will keep your carpet looking great for its full lifetime, help improve your indoor air quality also.

- A good vacuuming program is essential to successful carpet maintenance as it reduces the frequency of periodic maintenance procedures required to maintain clean carpet.
- It is very important that the carpet tile is not over wet when using the deep cleansing process as this could cause irreparable damage to the carpet tile.
- A daily spot and stain removal process should also be implemented. Remove stains or spills immediately using clean warm water.
- It is also important that effective entrance barrier matting is installed at every exterior entrance. Avoid excessive use of cleaning products. Regular maintenance will help to preserve the appearance and extend the life of the carpet.
- Spots must be removed soon as they are noticed. Cleaning of soiled areas when they begin to show is essential. This can be done by a wet extraction system.
- Remove as much of food spills as possible by scraping gently with a spoon or dull knife.

PRODUCT NOTES

Product Specifications are derived from average resulting from normal tolerance in yarn, fibre, temperature, humidity & color may vary within normal industry & standardized testing tolerances.

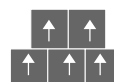
Specification may change when technological advancements become available which provide for improvement of the product performance.

Color may vary slightly from dye lot to dye lot.

RECOMMENDED INSTALLATION METHOD



Quarter Turned



Brick



Monolithic



Ashlar



Isolation acoustic



Isolation thermic



Chaisea roulette



Anti-static



Colorfast



Wear warranties



Reduce flammability

Accreditation:

Manufactured under a certified Quality Management System ISO9001

Manufactured under a certified Environmental Management System ISO14001

CRI's Green Label Plus standards for Indoor Air Quality

ITS NOT JUST SIMPLE, ITS CREATIVITY

Your Authorized Infinity Partner

